



THORMA

More than 100 year tradition

EXCLUSIVE PRODUCTS



Contents



Delia Ceramic	4
Delia Serpentino	6
Atika	8
Cadiz	10
Andorra Ceramic	12
Andorra Serpentino	14
Falun	16
Toledo	17
Wiesbaden	18
Accumulation refractory	19
Technical details	19



Accumulation refractory



External air supply



Efficiency



Flue outlet – top



Flue outlet – back



Storage space



THORMA Výroba – limited partnership is a company that was established in 1998 and it continues in almost one hundred year tradition of ex-manufacturing corporation Kovosmalt Fiřakovo.

It became familiar to customers mainly by high-quality products with a long-time tradition, which are in compliance with demanding requirements of European standards. Crucial productive activity is the production of stoves, fireplaces and ovens for solid fuel, enamelled products, components for automobile industry and engineering industry. The company exports abroad more than 85% of its production. Its product portfolio has been continually and actively adjusted according to the market demand by own development, design, construction and the testing room.

In 2008 in the states of EU there have been agreed new climate goals for the greenhouse gas reduction. The key to success are renewable resources of energy. Neutral CO₂ is produced by wood combustion in modern heating appliances. The environment is less burdened in that way. Wood from domestic forests is available and the production of wood logs does not require any additional energy.

THORMA has been producing heating appliances that do not burden the environment for many years. Our stove are protected with heat resistant water based color. These heating appliances have been tested in compliance with the strict regulations. THORMA heating appliances are sold in almost 20 European countries and their owners are pleased by agreeable and economical warm.

THORMA quality has a future.

Unbranded product

40%



5,5 kg/h.



Combustion efficiency



THORMA

80%



2,3 kg/h.

CERTIFICATES

①



The abbreviation Conformité Européenne provides security that a product is in compliance with all requirements of EU and that it is provable thanks to the relevant documentation as well

②

§15a B-VG
od 2015

Products with this symbol are in compliance with the Austrian law for protection of the environment against harmful effects

③

BImSchV 2

Products with this symbol are in compliance with the 2nd grade of German federal law for protection against air pollution

④



Products with this symbol are in compliance with the requirements of VKF (Cantonal Fire Insurance Association), Swiss coordination center for fire safety

⑤



Products with this symbol are in compliance with the relevant Russian state norm.

⑥

Norwegian Standard

Norwegian standard - Products with this symbol are in compliance with the relevant Norwegian state norm. NS 3058-1, NS3058-2, NS3059.

⑦



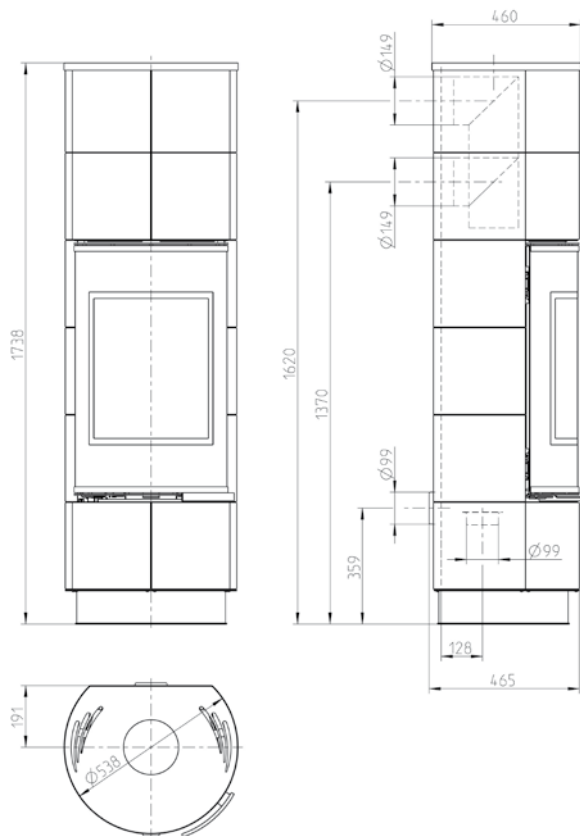
Products under that trade mark correspond to British standards of Defra emissions.



DELIA Ceramic

DELIA Ceramic and DELIA Serpentino are among the top models of the THORMA product range of exclusive products. They are elegant and dominant and are the ideal solution for people looking for stylish living.

DELIA Ceramic



DELIA Ceramic Standard White
F9489212010



* available also in black ceramic

DELIA Ceramic Extra Black
F9489621011



DELIA Ceramic Extra White
F9489622011



DELIA Ceramic Plus Black
F9489611011



DELIA Ceramic Plus White
F9489612011



DELIA Ceramic

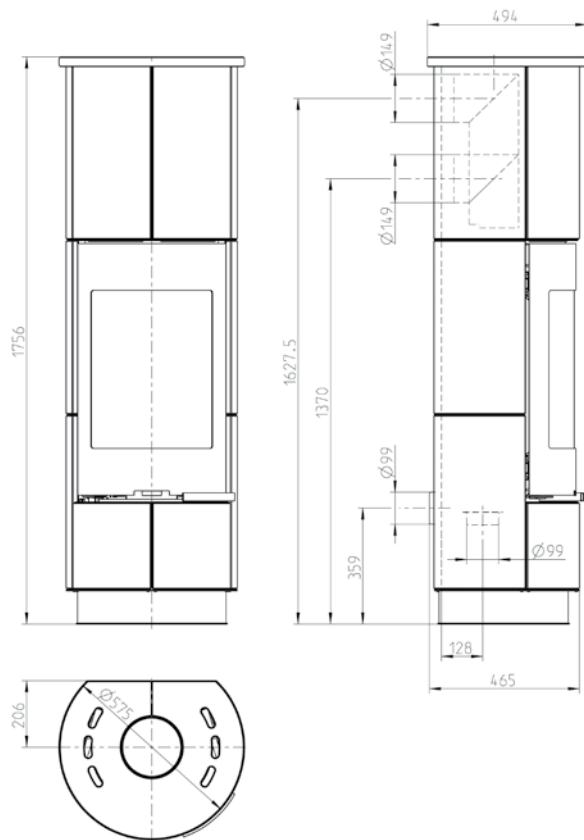
Weight	136 kg
Regulation range	3,8 ÷ 11,2 kW
Heat capacity	98 ÷ 180 m ³
Flue outlet	top, back
Fuel type	wood, briquette
Maximal length of wood	25 cm
Flue gas flow wood / briquette	6,9 / 8,1 g/s
Chimney draught	12 Pa
Certificates	1, 2, 3, 4, 5, 6, 7



DELIA Serpentino

Serpentino Soapstone is known as the ideal material for woodburning masonry heaters because it can absorb, store, and evenly radiate heat due to its high density.

DELIA Serpentino Standard



DELIA Serpentino Extra
F9489640611



DELIA Serpentino Plus
F9489630611



DELIA Serpentino
F9489230610



DELIA Serpentino

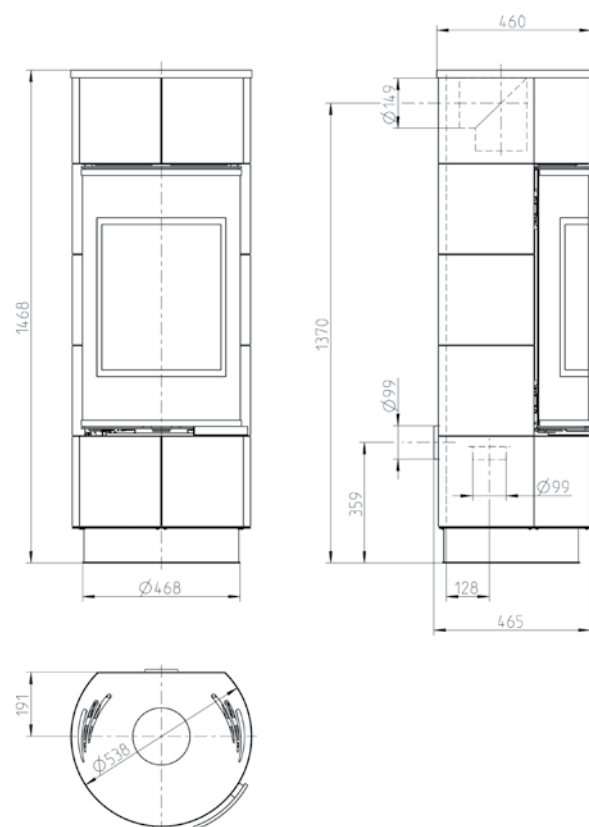
Weight	271 kg
Regulation range	3,8 ÷ 11,2 kW
Heat capacity	98 ÷ 180 m ³
Flue outlet	top, back
Fuel type	wood, briquette
Maximal length of wood	25 cm
Flue gas flow wood / briquette	6,9 / 8,1 g/s
Chimney draught	12 Pa
Certificates	1, 2, 3, 4, 5, 6, 7



ATIKA

The ATIKA model is made with handmade ceramic tiles in several colors. The product can be equipped with extra accumulation stone to prolong the heat radiation up to 9 hours after the fire extinguished. It is the perfect choice for a modern style of living.

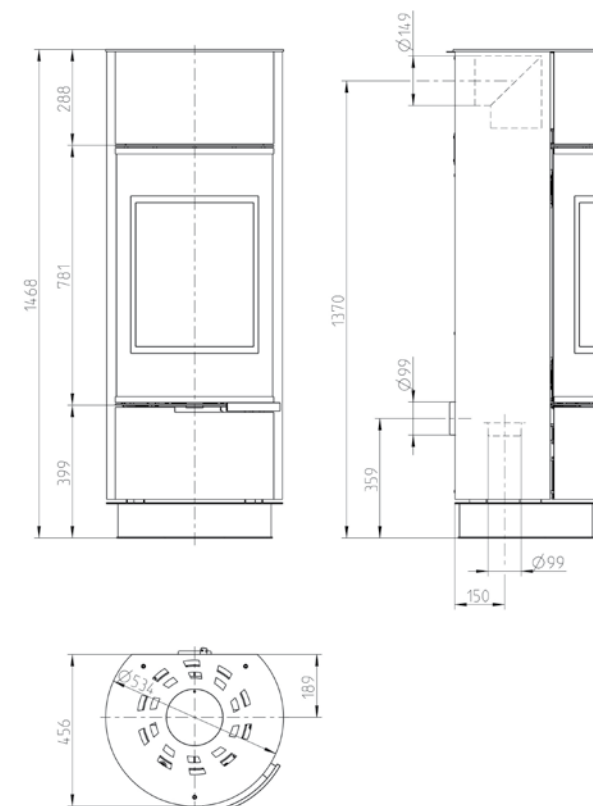
ATIKA Ceramic



ATIKA White

- ❶ Elegant handle in black nickel. The handle stay cool even by the operation and it is safe to touch it.
- ❷ The preheated secondary air is directed on glass to wash it and to keep it clean. It is not necessary to clean it more than once per week by using a dry wood.
- ❸ In the offer are also variants with accumulation system. Accumulation refractory stores heat and prolong the heat radiation up to 9 hours after the fire extinguished.
- ❹ There are holes at the top to allow warm air to flow. The design allows convection air to flow faster and brings a higher efficiency.
- ❺ Single regulator controls the volume of primary and secondary air and is used to regulate the power and air supply.

ATIKA Steel



ATIKA Ceramic Extra Black
F9489651011



ATIKA Ceramic Extra White
F9489652011



ATIKA Steel
F9489480611



ATIKA White
F9489322011



ATIKA Serpentino Extra
F9489660611



ATIKA Serpentino
F9489340611



ATIKA Extra

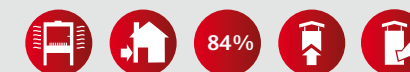
Weight	128 kg
Regulation range	3,8 ÷ 11,2 kW
Heat capacity	98 ÷ 180 m ³
Flue outlet	top, back
Fuel type	wood, briquette
Maximal length of wood	25 cm
Flue gas flow wood / briquette	6,9 / 8,1 g/s
Chimney draught	12 Pa
Certificates	1, 2, 3, 4, 5, 7

ATIKA Steel

Weight	130 kg
Regulation range	3,8 ÷ 11,2 kW
Heat capacity	98 ÷ 180 m ³
Flue outlet	top, back
Fuel type	wood, briquette
Maximal length of wood	25 cm
Flue gas flow wood / briquette	6,9 / 8,1 g/s
Chimney draught	12 Pa
Certificates	1, 2, 3, 4, 5, 7

ATIKA Serpentino

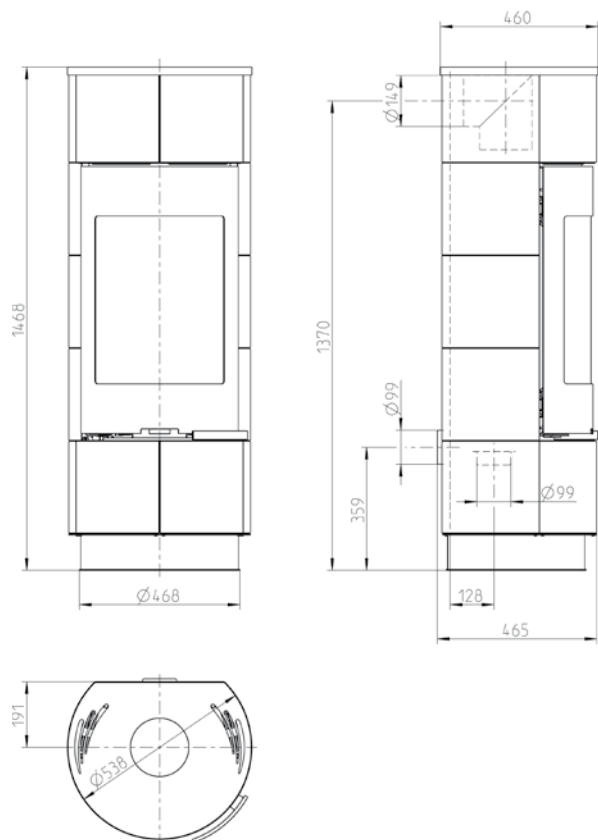
Weight	246 kg
Regulation range	3,8 ÷ 11,2 kW
Heat capacity	98 ÷ 180 m ³
Flue outlet	top, back
Fuel type	wood, briquette
Maximal length of wood	25 cm
Flue gas flow wood / briquette	6,9 / 8,1 g/s
Chimney draught	12 Pa
Certificates	1, 2, 3, 4, 5, 7



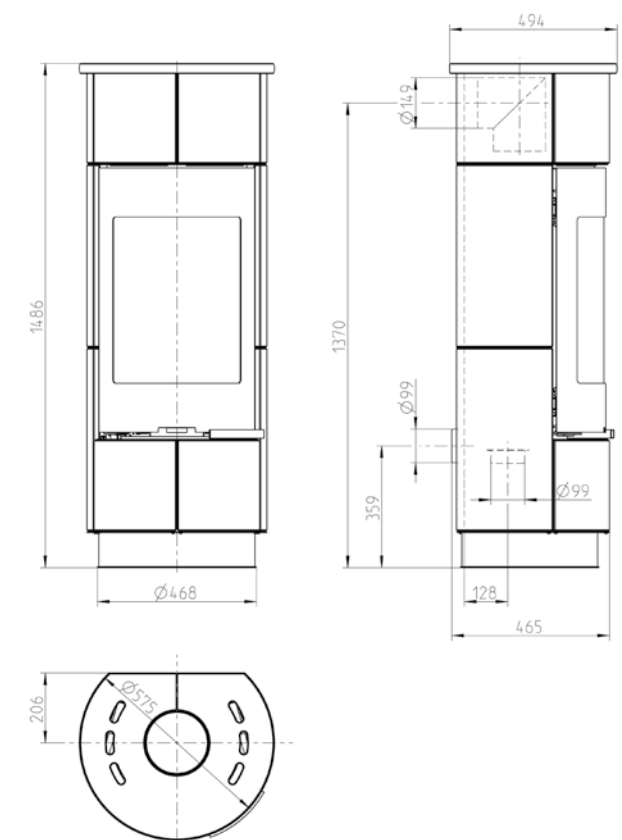
CADIZ

The CADIZ Ceramic is a cylindrical woodburner with a large curved door to enjoy the flames from all areas of your room. Fabulous white ceramic sides and top to help radiate heat long after the fire has died down.

CADIZ Ceramic



CADIZ Serpentino



CADIZ Serpentino
F9489280610



CADIZ Serpentino

Weight	242 kg
Regulation range	3,8 ÷ 11,2 kW
Heat capacity	98 ÷ 180 m³
Flue outlet	top, back
Fuel type	wood, briquette
Maximal length of wood	25 cm
Flue gas flow wood / briquette	6,9 / 8,1 g/s
Chimney draught	12 Pa
Certificates	1, 2, 3, 4, 5, 6, 7



CADIZ Ceramic White
F9489272010



CADIZ Ceramic

Weight	124 kg
Regulation range	3,8 ÷ 11,2 kW
Heat capacity	98 ÷ 180 m³
Flue outlet	top, back
Fuel type	wood, briquette
Maximal length of wood	25 cm
Flue gas flow wood / briquette	6,9 / 8,1 g/s
Chimney draught	12 Pa
Certificates	1, 2, 3, 4, 5, 6, 7

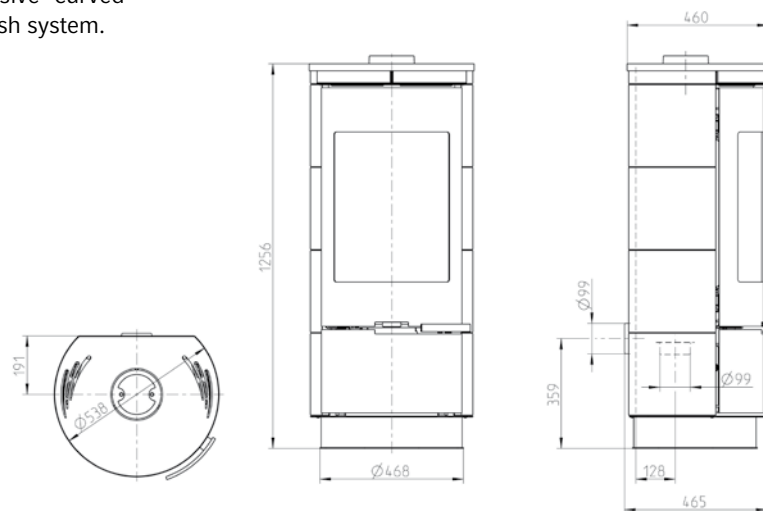


ANDORRA Ceramic

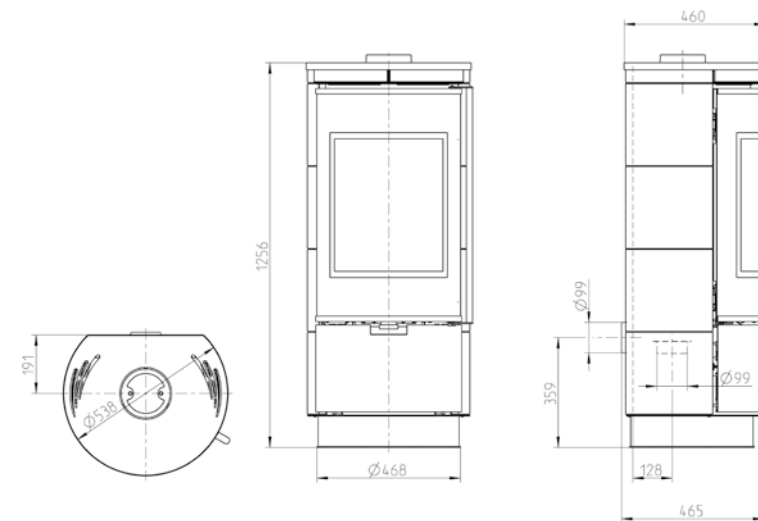


This is a contemporary free standing stove, offering superb views of a dancing fire through an expansive curved ceramic glass window, kept clean by the airwash system.

ANDORRA Ceramic Standard



ANDORRA Ceramic Extra



ANDORRA Ceramic Plus Black
F9489721011



ANDORRA Ceramic Plus White
F9489722011



ANDORRA Ceramic Standard Black*
F9489711011



* available also in white ceramic

ANDORRA Ceramic Extra Black
F9489731011



ANDORRA Ceramic Extra White
F9489732011



ANDORRA Ceramic

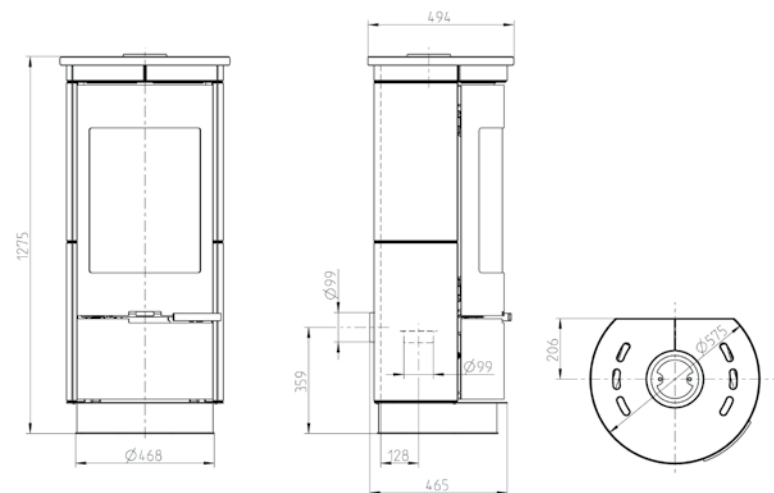
Weight	117 kg
Regulation range	3,8 ÷ 11,2 kW
Heat capacity	98 ÷ 180 m ³
Flue outlet	top
Fuel type	wood, briquette
Maximal length of wood	25 cm
Flue gas flow wood / briquette	6,9 / 8,9 g/s
Chimney draught	12 Pa
Certificates	1, 2, 3, 4, 5, 6, 7



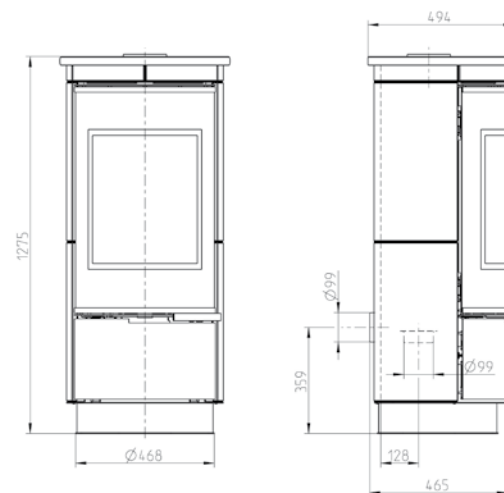
ANDORRA Serpentino



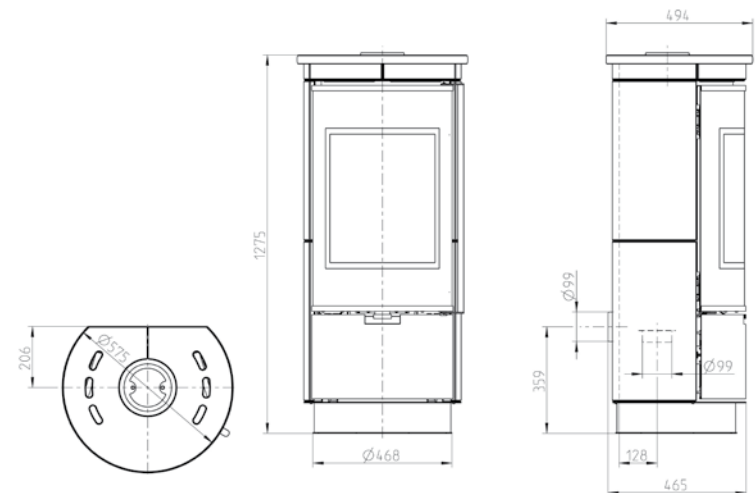
ANDORRA Serpentino Standard



ANDORRA Serpentino Plus



ANDORRA Serpentino Extra



ANDORRA Serpentino Standard
F9489740611



ANDORRA Serpentino Plus
F9489750611



ANDORRA Serpentino Extra
F9489760611



ANDORRA Serpentino

Weight	235 kg
Regulation range	3,8 ÷ 11,2 kW
Heat capacity	98 ÷ 180 m ³
Flue outlet	top
Fuel type	wood, briquette
Maximal length of wood	25 cm
Flue gas flow wood / briquette	6,9 / 8,9 g/s
Chimney draught	12 Pa
Certificates	1, 2, 3, 4, 5, 6, 7



FALUN

A stylish and efficient freestanding stove with good sized viewing window and a storage drawer to keep the hearth less cluttered. The stove although primarily designed as a wood burner, will also burn lignite briquets. It can be adapted to draw air from outside for room sealed installations. Serpentino Soapstone is known as the ideal material for wood burning masonry heaters because it can absorb, store, and evenly radiate heat due to its high density.

FALUN Serpentino

Weight	182 kg
Regulation range	4 ÷ 12 kW
Heat capacity	98 ÷ 190 m³
Flue outlet	top
Fuel type	wood, briquette
Maximal length of wood	25 cm
Flue gas flow wood / briquette	6,1 / 10 g/s
Chimney draught	10 Pa
Certificates	1, 2, 3, 5, 7

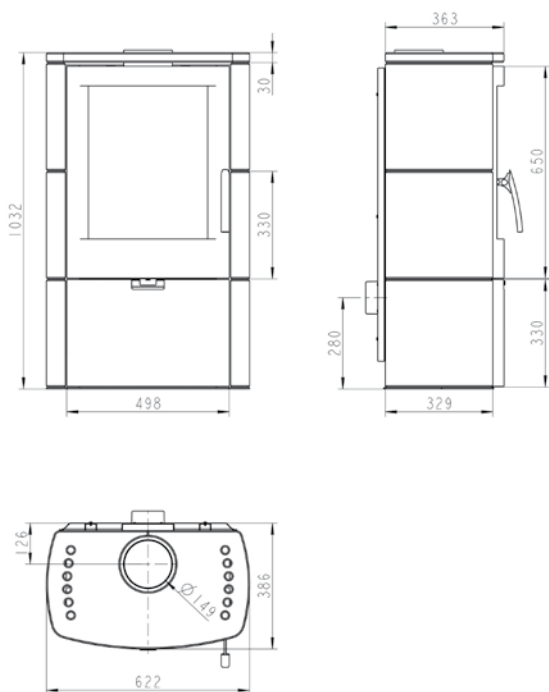


82%



FALUN Serpentino
F9480047018

FALUN Serpentino



TOLEDO

Weight	124 kg
Regulation range	3,8 ÷ 11,2 kW
Heat capacity	98 ÷ 180 m ³
Flue outlet	top
Fuel type	wood, briquette
Maximal length of wood	25 cm
Flue gas flow wood / briquette	6,9 / 8,1 g/s
Chimney draught	12 Pa
Certificates	1, 2, 3, 4, 5, 7



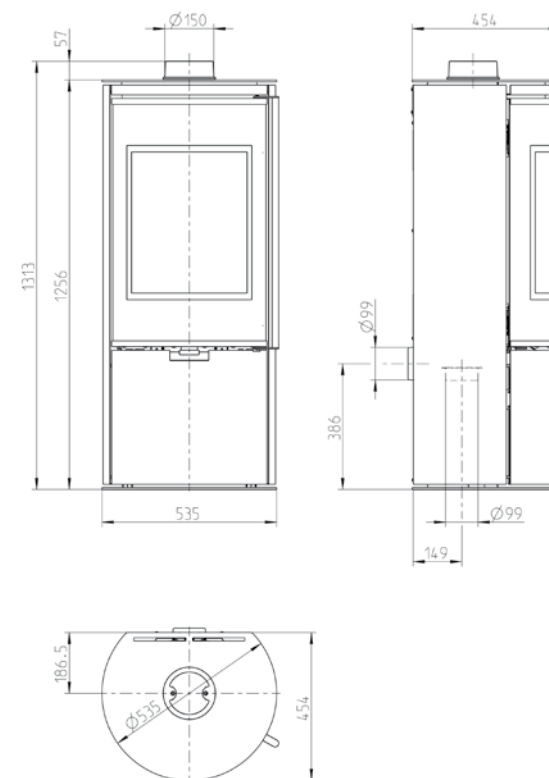
TOLEDO Black
F9489470611

TOLEDO

TOLEDO features a long handle that makes it easy to open the door. The handle is air-cooled to be safe. The large glass door allows you to relax by looking at the flames and this makes the fireplace a design interior element.



TOLEDO Black

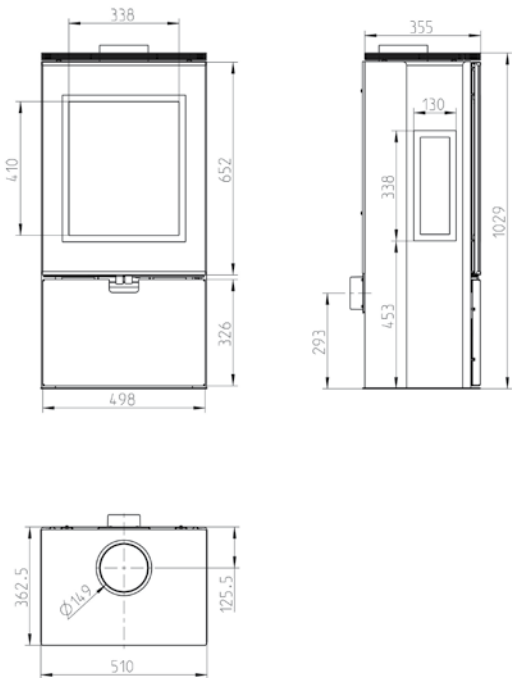


WIESBADEN

WIESBADEN
F9480530611

WIESBADEN is a timeless, elegant and standalone fixture for any design and style of home. Its unique 3-Sided glass panels that is achieved by adding glass panels to side of the stove which provide the extra generous visual access to the fire box.

WIESBADEN



WIESBADEN

Weight	107 kg
Regulation range	4 ÷ 12 kW
Heat capacity	98 ÷ 190 m ³
Flue outlet	top
Fuel type	wood, briquette
Maximal length of wood	25 cm
Flue gas flow wood / briquette	6,1 / 10 g/s
Chimney draught	10 Pa
Certificates	1, 2, 3, 5, 7

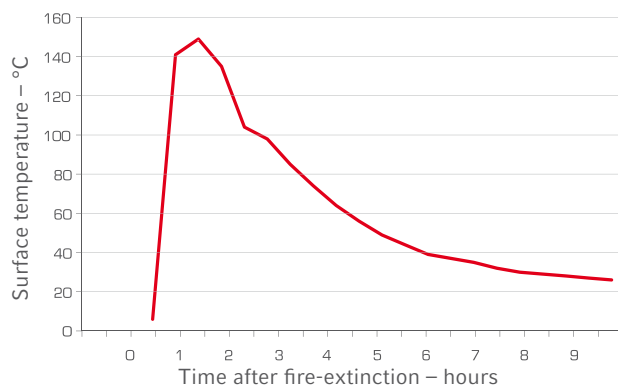


Accumulation refractory

Special material with its ability to accumulate heat, will warm you many hours even after burning out of the stove.



Fireplace stove with accumulation refractory concrete

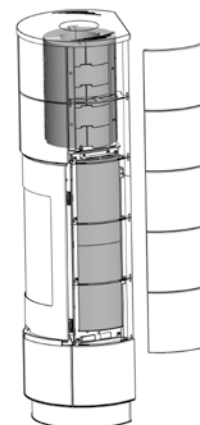


QUANTITY AND WEIGHT OF REFRACTORY CONCRETE IN PRODUCT

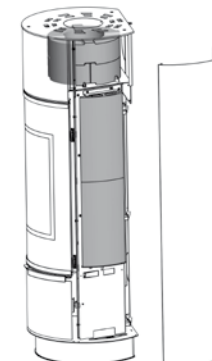
Product	Side [4,5 kg]	Halfring [5,3 kg]	Total [kg]
ANDORA	4		19,2
ANDORA Exclusive	4		19,2
ATIKA	4	4	40,4
CADIZ	4	4	40,4
CADIZ Serpentino	4	4	21,2
DELIA	4	6	51
DELIA Serpentino	4	10	53
FALUN II	2		9,6
TOLEDO	4		19,2

DEMONSTRATION OF INSTALATION

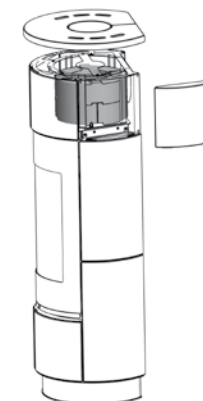
DELIA



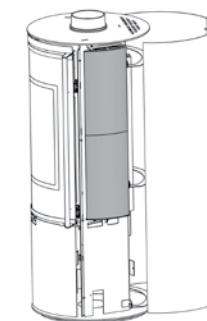
ATIKA Steel



CADIZ Serpentino



TOLEDO Exclusive



Technical data

		Output [kW]	Efficiency (wood) [%]	Weight net [kg]	Regulation range [kW]	Heat capacity [m³]	Flue outlet	Fuel type	Max. length of wood	Flue gas flow (wood / briquette) [g/s]	Chimney draught [Pa]	Wood consumption [kg/h]*	Flue gas temperature (wood) [°C]	Certificates
F9489212010	DELIA black/Ceramica white	7.5	84.2	136	3,8 ÷ 11,2	98 ÷ 180	top, back	wood, briquette	25 cm	6,9 / 8,1	12	2,3	202,5	1,2,3,4,5,6,7
F9489612011	DELIA Plus black/cer. white	7.5	84.2	136	3,8 ÷ 11,2	98 ÷ 180	top, back	wood, briquette	25 cm	6,9 / 8,1	12	2,3	202,5	1,2,3,4,5,7
F9489622011	DELIA Extra black/cer. white	7.5	84.2	136	3,8 ÷ 11,2	98 ÷ 180	top, back	wood, briquette	25 cm	6,9 / 8,1	12	2,3	202,5	1,2,3,4,5,7
F9489611011	DELIA Plus black/cer. black	7.5	84.2	136	3,8 ÷ 11,2	98 ÷ 180	top, back	wood, briquette	25 cm	6,9 / 8,1	12	2,3	202,5	1,2,3,4,5,7
F9489621011	DELIA Extra black/cer. black	7.5	84.2	136	3,8 ÷ 11,2	98 ÷ 180	top, back	wood, briquette	25 cm	6,9 / 8,1	12	2,3	202,5	1,2,3,4,5,7
F9489230610	DELIA black/serpentino	7.5	84.2	271	3,8 ÷ 11,2	98 ÷ 180	top, back	wood, briquette	25 cm	6,9 / 8,1	12	2,3	202,5	1,2,3,4,5,6,7
F9489630611	DELIA Plus black/serpentino	7.5	84.2	271	3,8 ÷ 11,2	98 ÷ 180	top, back	wood, briquette	25 cm	6,9 / 8,1	12	2,3	202,5	1,2,3,4,5,7
F9489640611	DELIA Extra black/serpentino	7.5	84.2	271	3,8 ÷ 11,2	98 ÷ 180	top, back	wood, briquette	25 cm	6,9 / 8,1	12	2,3	202,5	1,2,3,4,5,7
F9489652011	ATIKA Extra black/ker. white	7.5	84.2	128	3,8 ÷ 11,2	98 ÷ 180	top, back	wood, briquette	25 cm	6,9 / 8,1	12	2,3	202,5	1,2,3,4,5,7
F9489651011	ATIKA Extra black/cer. black	7.5	84.2	128	3,8 ÷ 11,2	98 ÷ 180	top, back	wood, briquette	25 cm	6,9 / 8,1	12	2,3	202,5	1,2,3,4,5,7
F9489320611	ATIKA black/cer. black	7.5	84.2	128	3,8 ÷ 11,2	98 ÷ 180	top, back	wood, briquette	25 cm	6,9 / 8,1	12	2,3	202,5	1,2,3,4,5,7
F9489322011	ATIKA black/cer. white	7.5	84.2	128	3,8 ÷ 11,2	98 ÷ 180	top, back	wood, briquette	25 cm	6,9 / 8,1	12	2,3	202,5	1,2,3,4,5,7
F9489340611	ATIKA black/serpentino	7.5	84.2	246	3,8 ÷ 11,2	98 ÷ 180	top, back	wood, briquette	25 cm	6,9 / 8,1	12	2,3	202,5	1,2,3,4,5,7
F9489660611	ATIKA Extra black/serpentino	7.5	84.2	246	3,8 ÷ 11,2	98 ÷ 180	top, back	wood, briquette	25 cm	6,9 / 8,1	12	2,3	202,5	1,2,3,4,5,7
F9489480611	ATIKA Steel black	7.5	84.2	130	3,8 ÷ 11,2	98 ÷ 180	top, back	wood, briquette	25 cm	6,9 / 8,1	12	2,3	202,5	1,2,3,4,5,7
F9489280610	CADIZ black/serpentino	7.5	84.2	242	3,8 ÷ 11,2	98 ÷ 180	top, back	wood, briquette	25 cm	6,9 / 8,1	12	2,3	202,5	1,2,3,4,5,6,7
F9489272010	CADIZ black/cer. white	7.5	84.2	124	3,8 ÷ 11,2	98 ÷ 180	top, back	wood, briquette	25 cm	6,9 / 8,1	12	2,3	202,5	1,2,3,4,5,6,7
F9489712011	ANDORRA black/cer. white	7.5	80.4	117	3,8 ÷ 11,2	98 ÷ 180	top	wood, briquette	25 cm	6,9 / 8,9	12	2,32	248	1,2,3,4,5,6,7
F9489722011	ANDORRA Plus black/cer. white	7.5	80.4	117	3,8 ÷ 11,2	98 ÷ 180	top	wood, briquette	25 cm	6,9 / 8,9	12	2,32	248	1,2,3,4,5,7
F9489732011	ANDORRA Extra black/cer. white	7.5	80.4	117	3,8 ÷ 11,2	98 ÷ 180	top	wood, briquette	25 cm	6,9 / 8,9	12	2,32	248	1,2,3,4,5,7
F9489711011	ANDORRA black/cer. black	7.5	80.4	117	3,8 ÷ 11,2	98 ÷ 180	top	wood, briquette	25 cm	6,9 / 8,9	12	2,32	248	1,2,3,4,5,6,7
F9489721011	ANDORRA Plus black/cer. black	7.5	80.4	117	3,8 ÷ 11,2	98 ÷ 180	top	wood, briquette	25 cm	6,9 / 8,9	12	2,32	248	1,2,3,4,5,7
F9489731011	ANDORRA Extra black/cer. black	7.5	80.4	117	3,8 ÷ 11,2	98 ÷ 180	top	wood, briquette	25 cm	6,9 / 8,9	12	2,32	248	1,2,3,4,5,7
F9489740611	ANDORRA Standard black/serpentino	7.5	80.4	235	3,8 ÷ 11,2	98 ÷ 180	top	wood, briquette	25 cm	6,9 / 8,9	12	2,32	248	1,2,3,4,5,6,7
F9489750611	ANDORRA Plus black/serpentino	7.5	80.4	235	3,8 ÷ 11,2	98 ÷ 180	top	wood, briquette	25 cm	6,9 / 8,9	12	2,32	248	1,2,3,4,5,7
F9489760611	ANDORRA Extra black/serpentino	7.5	80.4	235	3,8 ÷ 11,2	98 ÷ 180	top	wood, briquette	25 cm	6,9 / 8,9	12	2,32	248	1,2,3,4,5,7
F9489470611	TOLEDO black	7.5	84.2	124	3,8 ÷ 11,2	98 ÷ 180	top	wood, briquette	25 cm	6,9 / 8,1	12	2,3	202,5	1,2,3,4,5,7
F9480530611	WIESBADEN black	8	82.3	107	4 ÷ 12	98 ÷ 190	top	wood, briquette	25 cm	6,1 / 10	10	2,35	261	1,2,3,5,7
F9480047018	FALUN grey/serpentino	8	82.3	182	4 ÷ 12	98 ÷ 190	top	wood, briquette	25 cm	6,1 / 10	10	2,35	261	1,2,3,5,7

All specifications, dimensions and information showed in our brochure are informative only and not binding. THORMA Výroba k.s. reserve the right for amend or change them.



THORMA

More than 100 year tradition

EXCLUSIVE PRODUCTS

THORMA Výroba, k.s.
Šávoľská cesta 1, 986 01 Fiľakovo
SLOVAKIA

HOTLINE: 0800 200 550
www.thorma.sk
<https://sk-sk.facebook.com/ThormaVyroba>



Scan and download the app which you can use to see our models in 3D.

1

Download the app from Apple store or Google play



2

Scan this page with the app.



3

Put the tracker on the position where the stove should stand.

